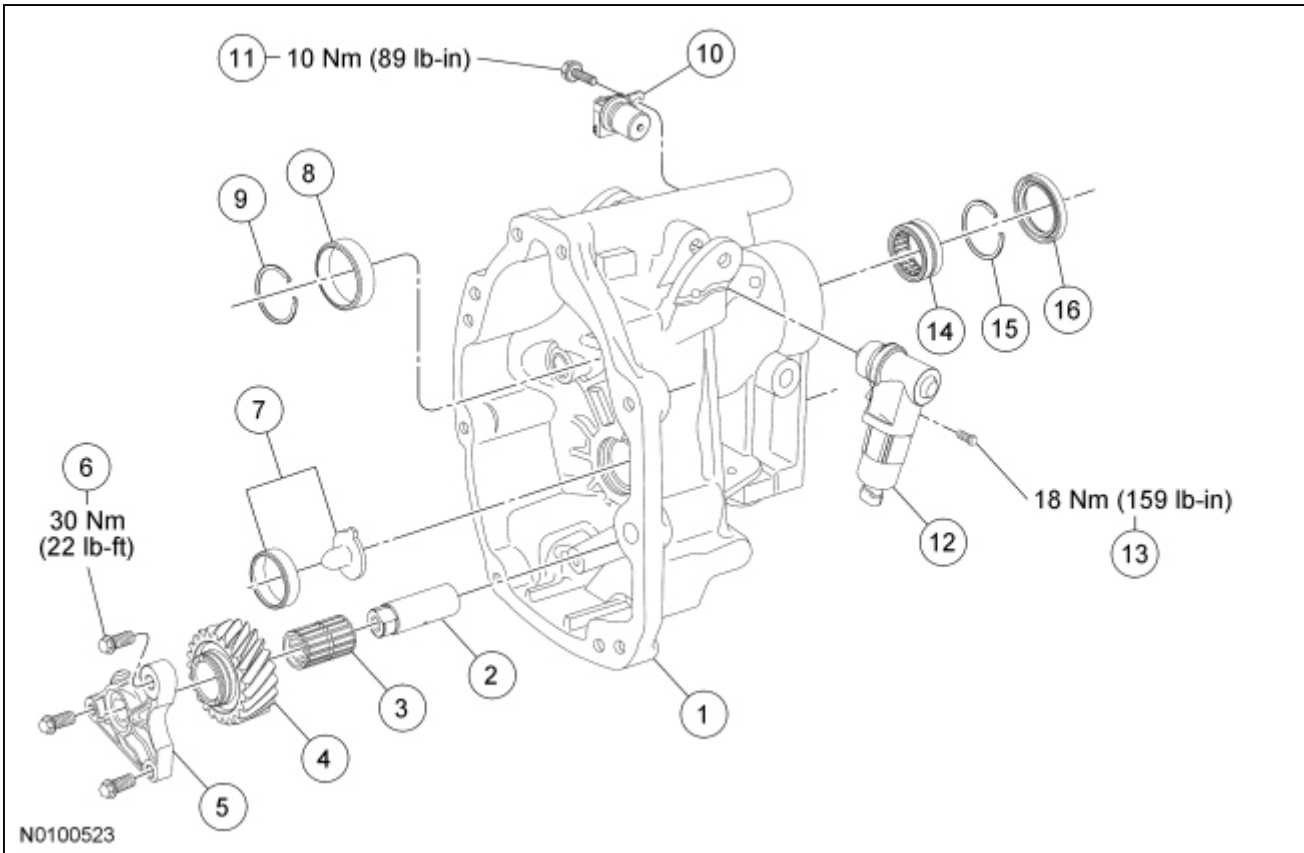
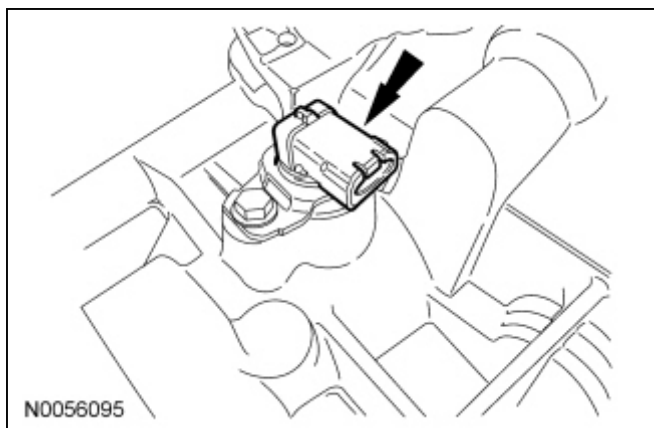


Extension Housing

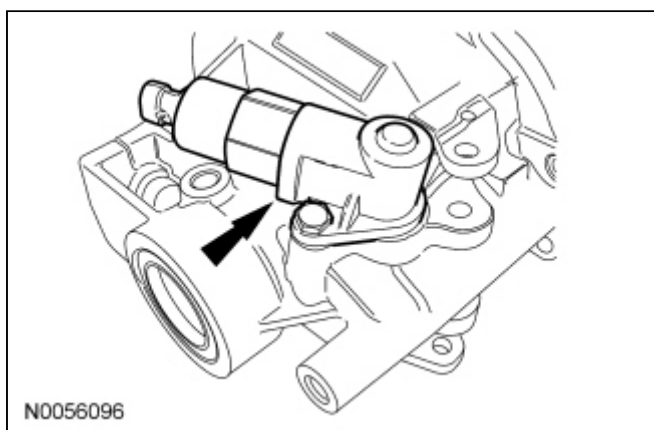


Item	Part Number	Description
1	7A039	Extension housing
2	7140	Reverse idler gear shaft
3	7025	Reverse idler gear needle bearing
4	7141	Reverse idler gear
5	7723	Reverse idler shaft bracket
6	—	Reverse idler shaft bracket bolt
7	—	Countershaft bearing cup and fluid funnel
8	—	Output shaft bearing cup
9	—	Snap ring
10	7H103	Output Shaft Speed (OSS) sensor
11	7A443	<u>OSS</u> sensor bolt
12	7374	Reverse lockout solenoid
13	—	Reverse lockout solenoid bolt
14	7025	Output shaft bearing
15	7A082	Output shaft bearing snap ring
16	7052	Extension housing seal

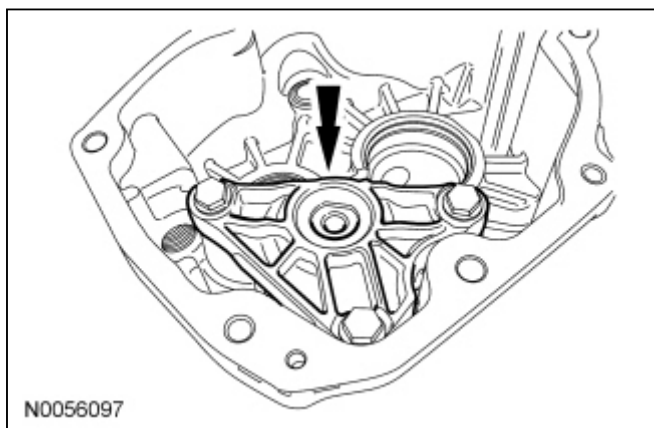
1. Remove the Output Shaft Speed (OSS) bolt and the OSS sensor.
 - To install, tighten to 10 Nm (89 lb-in).



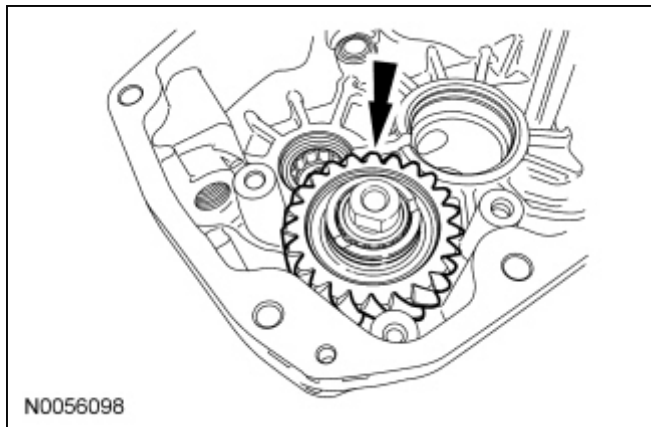
2. Remove the reverse lockout solenoid bolt and the reverse lockout solenoid.
 - To install, tighten to 18 Nm (159 lb-in).



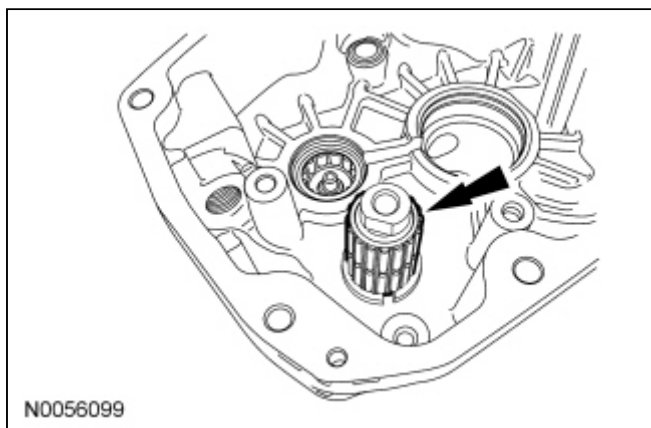
3. Remove the 3 reverse idler shaft bracket bolts and the reverse idler shaft bracket.
 - To install, tighten to 30 Nm (22 lb-ft).



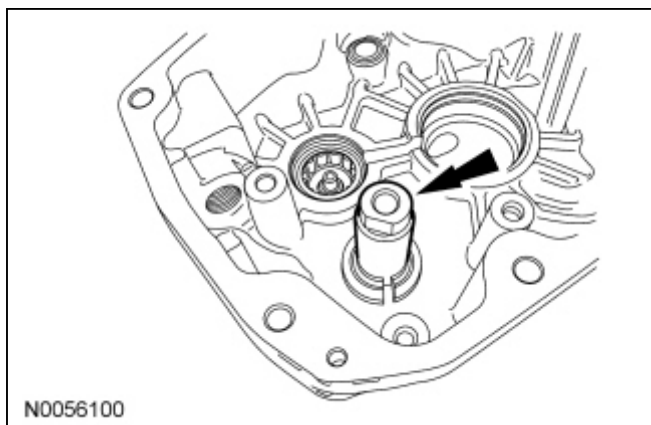
4. Remove the reverse idler gear.



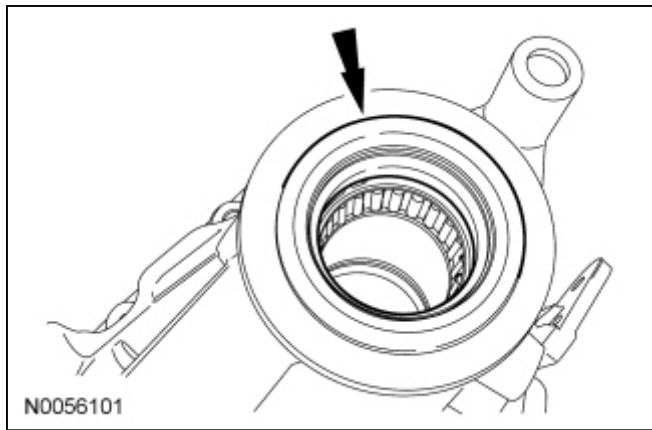
5. Remove the reverse idler gear needle bearing.
 - Inspect the needle bearing for wear or damage. Install a new bearing as necessary.



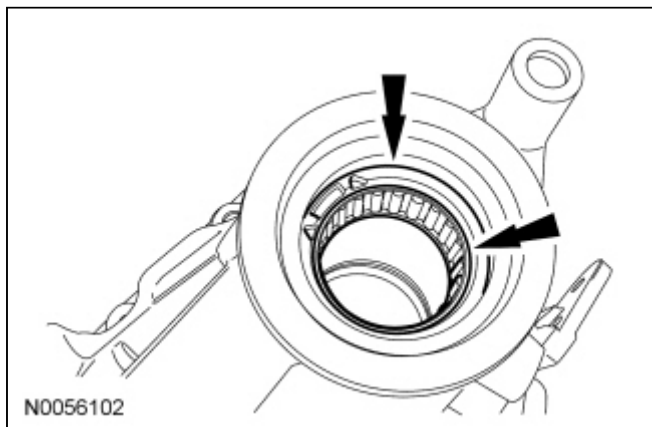
6. Remove the reverse idler gear shaft.



7. If necessary, remove the bearing and fluid funnel assembly.
8. Remove the output shaft bearing cup snap ring and the bearing cup.
 - Discard the snap ring.
9. Remove and discard the extension housing seal.



10. Clean the housing with solvent and dry with compressed air. Clean and check the sealing surface for nicks or scratches. Inspect the housing for cracks.
 - If the housing is cracked, install a new housing. If the sealing surface has nicks or scratches, use a soft stone or crocus cloth to remove.
11. Remove and discard the snap ring. Position the extension housing with the seal facing downward. Using a brass drift, remove the output shaft bearing.



12. To assemble, reverse the disassembly procedure.
 - Install new snap rings.
-

